

CNC EXPRESS MILL *GTS*

Summer 2005

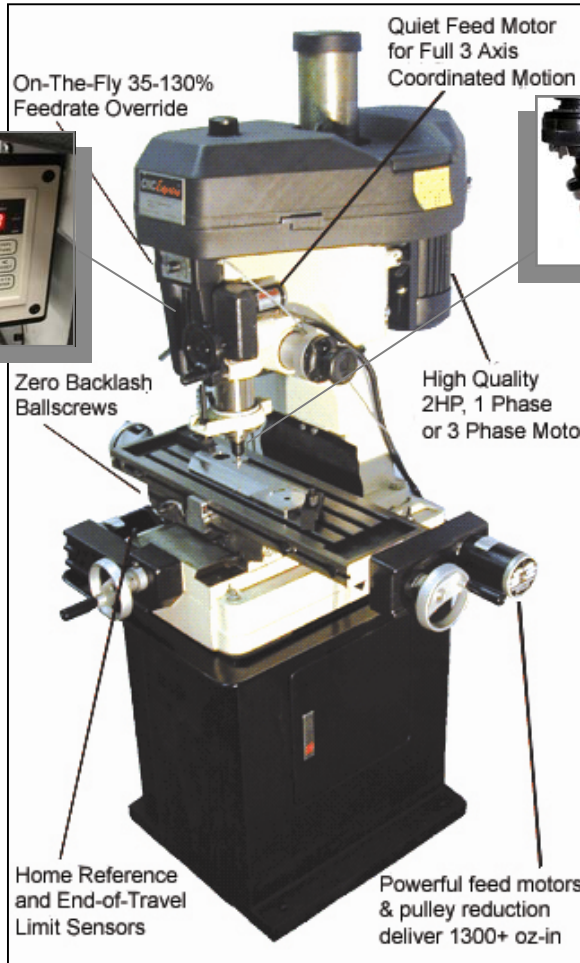
After building and delivering over 130 CNC Express machines over a period of 4 years, Microkinetics has developed an improved high performance version. The New CNC Express GTS is slated to begin deliveries in August 2005. The biggest improvements are: Windows XP/2000 support for the control software, serial connection, continuous contouring, quick tool change system, electronic spindle speed control from keypad and with S code from software, automatic bolt hole circle, pocketing, and RPM and feedrate selection based on material and tools. The GTS has all of these bells and whistles:

- ✓ MN400 advanced motion controller
- ✓ 8" CNC rotary table
- ✓ Variable speed spindle controller with a remote keypad
- ✓ Precision tapered roller bearings
- ✓ Quick change tooling which allows for one handed tool changes with precise registration
- ✓ Flood coolant system
- ✓ Safety shield/splash guard

The included frequency drive and 3 phase 2 HP motor allow operation from any 208-240 volt single phase or 3 phase power. The CNC Express GTS has a good size machining envelope, has very high speed performance, and has spindle cw/ccw/off and coolant on/off functions. The custom

made ball screws on both the X and Y axes allow precision conventional and climb operations and accurate circular and contour cuts along any pair of axes.

Offering impressive machining power and repeatability, the CNC Express Mill GTS is available as a prebuilt factory certified system as well as a user installed kit. Each CNC System is expertly built and performance tested to conform to stringent standards. All components are performance tested as individual units before integration into the machine, then the machines are performance and quality tested prior to shipment to ensure consistency, repeatability, and high quality. This process is carried through to packaging and crating. As an industry leader, Microkinetics includes a five year warranty on electronics and a one year warranty on mechanics. Our knowledgeable technical support staff is available by phone and email for any questions that may arise.



Find out about our **NEW** products & enhancements!

Page:

CNC Express Mill GTS	1
Exciting New Versions of MillMaster Pro & TurnMaster Pro 4.2	2 & 3
Advanced Motion Controller Goes to Production!	3
New CNC Lathe 1340 Now Available!	4
Improved Firmware in MN100 Controllers	4

SYSTEM FEATURES:

- Milling machine with 2 HP 3 phase motor and variable frequency drive
- 5TPI (.200") ball screws at .003" per foot maximum linear error
- 4th axis 8" rotary table with multiple axis motion interpolation
- Feed motor drive system delivers 1329 oz-in of torque on X and Y and 350 oz-in on Z
- DriveRack high performance power driver
- MN400 Advanced motion controller with feedrate override
- MillMaster Pro for Windows G-code control & graphical software
- Limit switches, cables, and technical manuals
- Included accessories: Cabinet stand with chip panning, shelf and latched door, flood coolant, quick change tools, quick change tool holder, clamp set, safety & splash shield, drill chuck and arbor, face mill with 4 HSS inserts, angle drill press vise, instruction manuals, and performance checklists.

From the President:



Dear valued customer:

I thank you for the much appreciated feedback, continued support, and encouragement. I believe in listening to our customers carefully and engineering the most requested products and features. My engineering team has developed several new products and enhancements that we are very excited to introduce. Read on to learn about the latest developments. Thank you for taking interest in my company's technological advances. We hope to be of service to you.

Best Regards,

Maurice Khano
President

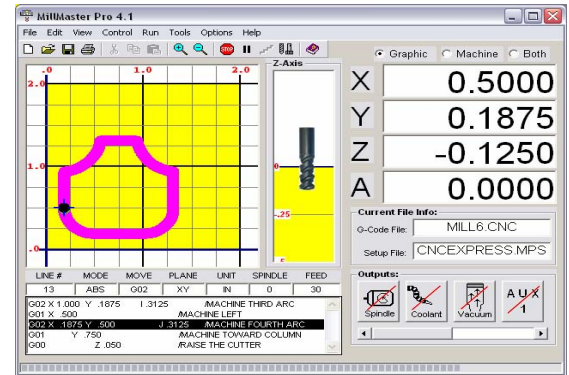
EXCITING NEW VERSIONS OF TURNMASTER PRO & MILLMASTER PRO 4.2!

Our flagship master control software for the mill and its counterpart for the lathe have been very popular and continue to be the choice of machining experts all over the world. We have just completed the final touches on a major upgrade for the two software packages.

NEW FEATURES:

- Added support for Windows XP and 2000. (The software now works with any Windows OS)
- Added support for the new MN400 controller. (Computer with ISA bus slots not needed)
- Added resizable windows to allow better utilization of large screens and easier viewing from a distance.
- Integrated math functions into the software. This allows writing of very sophisticated G-code programs that include arithmetic and trig functions like Sin, Cos, and Tan....The sky is the limit with what you can do with your part programs!
- Added decision making and branching based on variable/parameter value.
- New syntax checking routine provides helpful feedback on programming errors.
- Built in CNC Assist Tools that provide a convenient way to calculate:

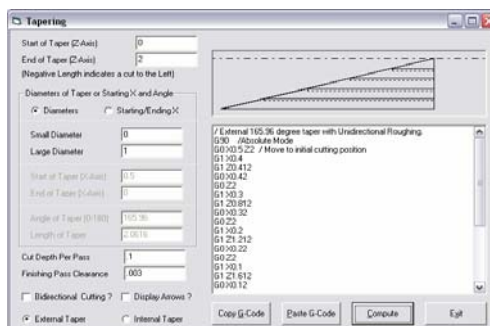
MILLMASTER PRO



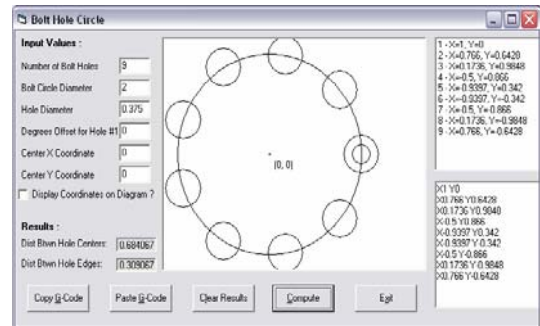
TURNMASTER PRO



TAPERS



BOLT-HOLE CIRCLE



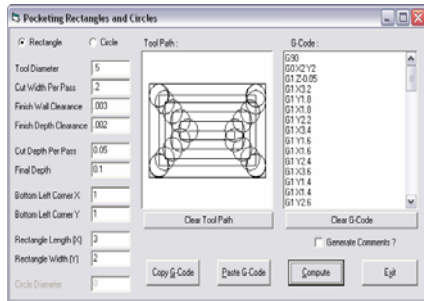
ONLINE ORDERING:

To place an order, please visit us at:
www.microkinetics.com

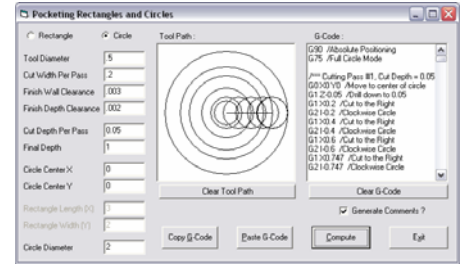
With an improved online ordering system, you may make credit card purchases through our secure server. For Tech Support or any other questions, you are welcome to call our new toll free line:

1-800-674-8419

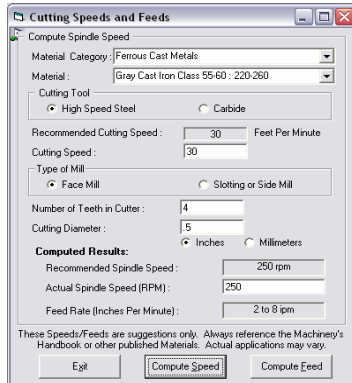
RECTANGULAR POCKETING:



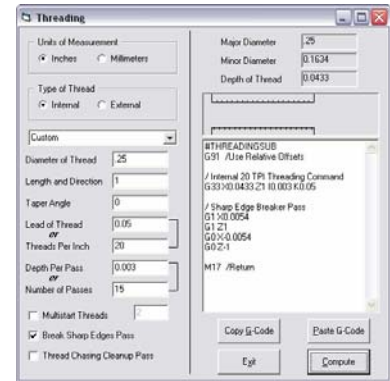
CIRCULAR POCKETING:



FEED RATE SELECTION:



THREADING:



And when using the new **MN400** controller you will also be able to do:

- Advanced continuous contouring
- Helical interpolation

All this plus various other enhancements that allow you to get the most enjoyment and productivity out of your machine!

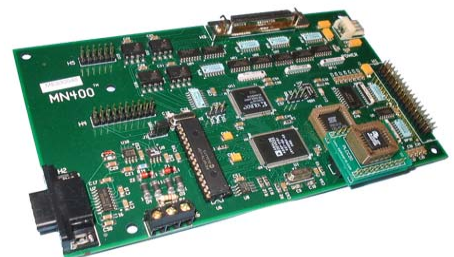
This update completely transforms the level of functionality of our two main software packages.

New Software Price: \$595.00 Upgrade from DOS: \$426.50 Upgrade from Windows: \$179.00

*As a courtesy, if you've purchased **MillMaster Pro** or **TurnMaster Pro** in June of 2005 or later, you will receive a free upgrade. Just contact us and we'll get you a free download and installation CD.*

ADVANCED MOTION CONTROLLER GOES TO PRODUCTION!

Featuring a DSP processor for very high speed motion control, continuous contouring, and helical interpolation, the new MN400 is the latest and greatest to come from MicroKinetics labs! Now in limited production quantities, MN400's are a part of the growing Motionet™ family of products designed for networked motion control with unprecedented value. The unit can be commanded from an RS232 or an RS485 communications port and allows for storage of local configuration, network address, and an 8k motion program that can be executed offline. The MN400 is a board level product that can easily be integrated into custom and specialized equipment.



NEW CNC LATHE 1340 NOW AVAILABLE!

For those of you who love the CNC Lathe 1236 but wish for a bit larger capacity, the 1340 model is the answer. We have built and delivered several of these solid lathes as custom, special order machines and they have worked out so well that we've decided to offer them as standard machines. The electronic threading option is available for this CNC lathe as well (although it requires different mounting hardware). With the included TurnMaster Pro software, this makes for a very impressive CNC turning system that offers substantial value. One customer is using the 1340 to make custom designed baseball bats! What can you make on a CNC Lathe with 40 inches between centers?



IMPROVED FIRMWARE IN MN100 CONTROLLERS



The MN100 are match book sized single axis controllers that have been employed as machine controllers where single axis control is needed or where multiple axes are controlled. Many applications do not require the precise coordination between axes achievable with our multi-axis controllers. Up to 127 of these units can be used on a single daisy chained two wire network. The latest firmware enhancements include the ability to download up to 4 motion programs and select and run any of these without the use of a laptop or PC. Simple push button switches that allow jogging also double as program selection. Also, a new learn mode feature has been added that allows programming the controller simply by using these switches. No computer or coding is necessary. The new capabilities are included at no extra charge. The MN100 controllers can be used on the same networked bus as MN400 controllers for distributed motion control or where indexing operations are needed in addition to the MN400's 4 axes of coordinated motion control.

WWW.MICROKINETICS.COM
KENNESAW, GA 30144
2117-A BARRETT PARK DRIVE

C O R P O R A T I O N
MICROKINETICS